

Eco-Closer Plus

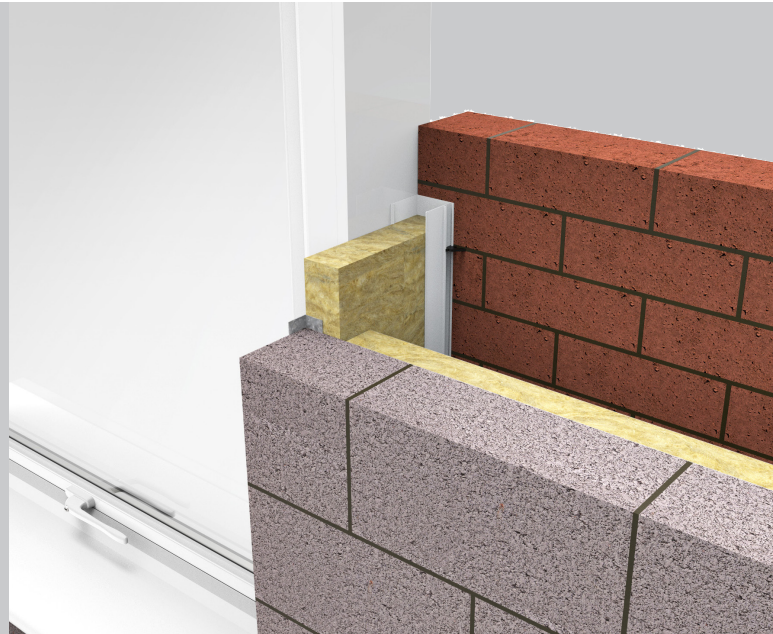


fire rated cavity closer
for window and door reveals



key features

- » Up to one hour fire integrity
- » Closes cavity around window and door reveals in larger cavities up to 300mm
- » Prevents cold bridging
- » Helps eliminate moisture, mould and staining from around windows and doors
- » Insulated with foil faced non-combustible rockfibre
- » Plastic profile acts as DPC
- » For cavity widths from up to 300mm



Application

ARC Eco-Closer Plus closes wider cavities around window and door openings in masonry walls, providing up to one hour fire integrity. The rigid PVCu profile is insulated with foil faced non-combustible rockfibre mineral wool which provides fire, thermal and acoustic properties.

Fire Properties

ARC Eco-Closer Plus has been fire tested at Warrington Fire Research, achieving up to one hour fire integrity with traditional masonry brick and block construction. These tests comply with BS 476: Part 20: 1987. *Certifire scope: CF5410.*

Where usage falls outside of this scope, for example when used with external cladding, or with an internal metal frame system, performance of the fire barrier will depend upon the structural integrity and fire performance of the surrounding construction.

Specifiers must ensure any part of the construction that makes up the internal or external leaf of the wall, including support systems, are suitable for use with a fire barrier for the length of fire integrity and insulation required. Particular attention must be paid to any possible deflection or distortion which could cause gaps to form between the material and a fire barrier.

In the event of a fire, ARC Building Solutions Ltd cannot accept liability for failure where usage is outside of the standard application, including but not limited to, where deflection or distortion has allowed gaps to form around the barrier, or where the barrier is not fitted in accordance with the manufacturer's guidelines.

Standards

ARC Eco-Closer Plus is insulated with rockfibre mineral wool which conforms to the BS EN 13162: 2001 Thermal Insulation Products for Buildings, Factory Made Mineral Wool Products specification, and has a thermal conductivity of 0.035W/mK.

Don't take our
word for it, see our
certification



Assessed to ISO 9001 & ISO 14001
BRE Certificate No. 1227



Storage and Packaging

ARC Eco-Closers are supplied in branded polythene packs which offer protection during transport as well as providing ease of identification on-site.

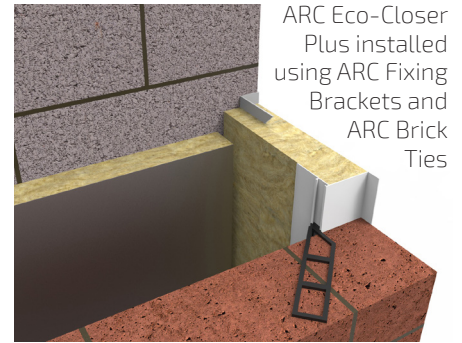
Installation

ARC Eco-Closer Plus is easily installed. Cut the jamb profile to the height of the window or door opening plus 75mm to allow the bottom edges to drop into the cavity below the sill. Once the jamb sections are installed, measure the required width for the sill section and cut a length to butt tightly to the jamb sections.

ARC Fixing Brackets should be used to mechanically fix Eco-Closer Plus to the inner blockwork, while ARC Brick Ties are then used to build the closer in as the external brickwork progresses. We recommend a minimum of 2 of each is used per metre, or piece, whichever is shorter.

If a longer length than 2.4m is required, the profile complete with insulation should carefully be cut using a hand saw. Lengths can then be tightly butted together, with care being taken to ensure no gaps remain.

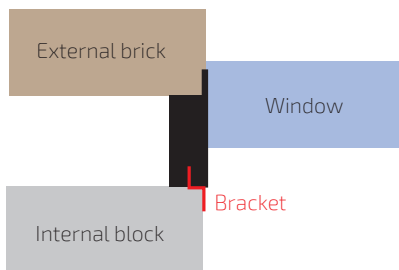
It is always recommended to fit the closer so that the plastic profile is against the external brickwork rather than the internal blockwork.



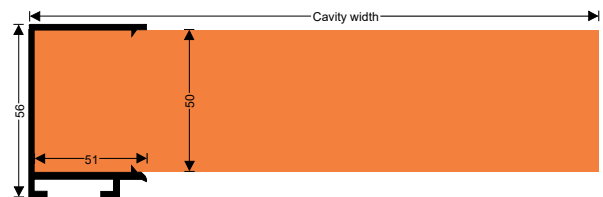
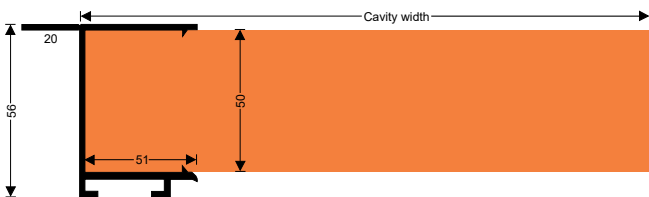
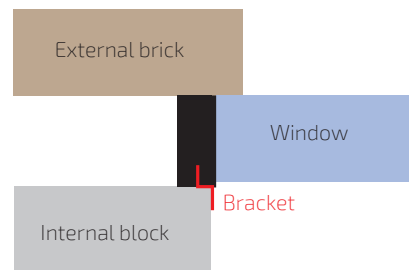
Check Reveal

ARC Eco-Closer Plus is supplied as standard with a single flange to suit standard details. A variant can be supplied with the 20mm flange removed from the plastic profile so that the closer can be used in check reveal details, where the window is set back behind the external brickwork.

Standard detail



Check reveal detail



Environment

No CFCs or HCFCs are involved in the manufacturing process of ARC's rockfibre mineral wool insulation. The material presents no known threat to the environment and is classed as ODP and GWP zero.

ARC Eco-Closers have a Green Guide rating of A+.

Health and Safety

ARC Building Solutions has an approved Health and Safety Policy and is committed to working and supplying products safely. We have assessed products as required by Substances Hazardous to Health Regulations (COSHH). An ARC COSHH data sheet is available and can be downloaded from ARC's website.

Standard Dimensions

Product Code	Suitable for Cavity Width	Dimensions	Fire Integrity (masonry)	Insulation	Lengths Per Pack
EC175PLUS	175mm	175 x 2400mm	1 hr	15 mins	3
EC200PLUS	200mm	200 x 2400mm	1 hr	15 mins	3
EC225PLUS	225mm	225 x 2400mm	1 hr	15 mins	2
EC250PLUS	250mm	250 x 2400mm	1 hr	15 mins	2
EC275PLUS	275mm	275 x 2400mm	1 hr	15 mins	1
EC300PLUS	300mm	300 x 2400mm	1 hr	15 mins	1
EC175PLUSCR - EC300PLUSCR	175mm - 300mm	As above	As above	As above	As above

Product Code	Description	Pack Quantity
BRICKTIES	ARC Brick Ties to suit Eco-Closer Plus	100
FIXING BRACKETSMALL	ARC Fixing Bracket to suit Eco-Closer Plus	1

Can't find your size?

ARC Eco-Closer Plus can be manufactured to suit any cavity width from 150 and 300mm. Contact us for more information.

Smaller cavity?

ARC Eco-Closer is a fire rated cavity closer available to fit cavities up to 150mm. Visit our website for more details.