

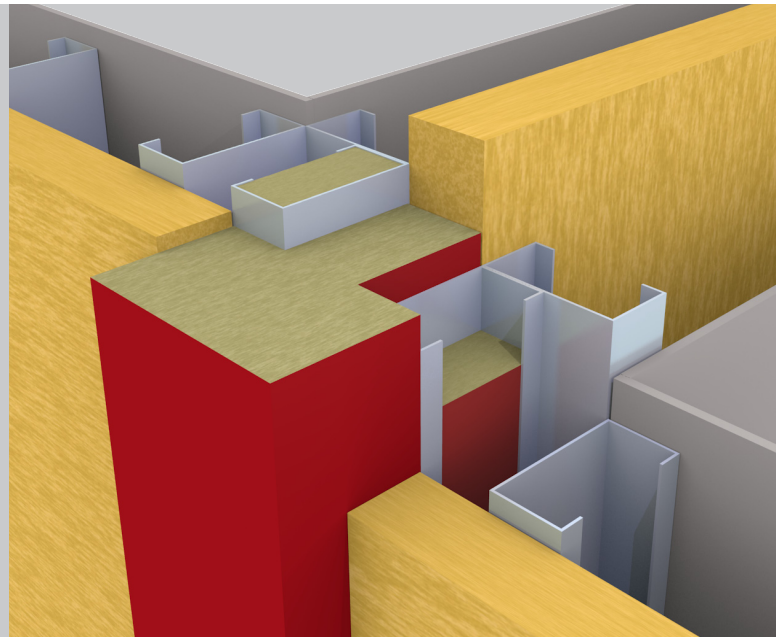
T-Barrier® Metal Frame



 cavity fire barrier
for metsec party wall junctions

key features

- » Up to four hours fire integrity
- » 3-piece system fire stops at the junction between the party wall and external wall
- » Excellent acoustic properties
- » Up to 150mm external cavity width
- » Polythene encapsulated for on site protection



Application

ARC T-Barrier Metal Frame is a 3-piece system that fits into and around the metal 'C' sections to offer up to 4 hours fire integrity in a metal frame construction where the external leaf is brickwork.

Fire Properties

ARC T-Barrier Metal Frame has been fire tested at Chiltern International Fire, achieving up to four hours fire integrity when installed as shown overleaf. These tests comply with BS 476: Part 20: 1987 and BSEN 1366-4: 2006, using the test method stated EGOLF TC2 N421 (fire resistance for cavity barriers).

Chiltern International Fire certificate number: IF12020

Standards

ARC T-Barrier is manufactured using rockfibre mineral wool which achieves a fire classification of Euroclass A1 as defined in BS EN 13501-1, and conforms to BS EN 13162 and EN16001 Energy Management Systems.

ARC's rockfibre mineral wool insulation has a thermal conductivity of 0.037W/mK.

Storage and Packaging

ARC T-Barriers are supplied in polythene packs which are designed for transporting and protecting the products. It is not recommended that the packs are stored in direct sunlight. When storing the barriers for longer periods of time it is recommended that the product should be stored indoors, or under cover.

Don't take our word for it, see our accreditation...



Assessed to ISO 9001 & ISO 14001
BRE Certificate No. 1227



T-Barrier Metal Frame

Installation

(See drawing)

Once the metal 'C' sections have been fitted, the two small barriers A and B are fitted snug into the C sections. Then, as the brickwork advances, the T section (C) can be fitted into the formed cavity.

Please note that in order to comply with our fire test data, the barrier and 'C' sections must be to the layout and dimensions as shown.

Environment

No CFCs or HCFCs are involved in the manufacturing process of ARC's rockfibre mineral wool insulation. The material presents no known threat to the environment and is classed as ODP and GWP zero.

ARC T-Barrier has a Green Guide rating of A+.

Health and Safety

ARC Building Solutions has an approved Health and Safety Policy and is committed to working and supplying products safely. ARC's rockfibre mineral wool is not classed as a possible human carcinogen. We have assessed products as required by Substances Hazardous to Health Regulations (COSHH). An ARC COSHH data sheet is available and can be downloaded from ARC's website.

