

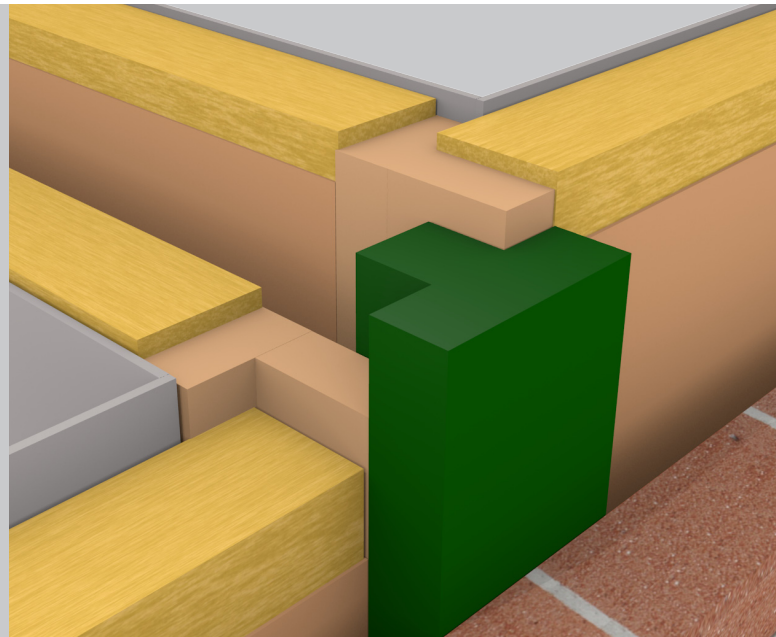
T-Barrier® Timber Frame



cavity fire barrier
for timber frame party wall junctions

key features

- » Up to one hour fire integrity
- » Seals edge of party wall cavity
- » Zero U-value at party wall can be achieved
- » Up to three times more effective as an edge seal than conventional systems
- » Reduces flanking noise
- » Minimises thermal bypass
- » Easy to install



Application

ARC T-Barrier enables the closing of an external cavity at a party wall junction where building regulations require the use of a mineral wool closer for acoustic insulation purposes. Additionally, it provides an effective edge seal around the party wall cavity, helping to achieve a zero U-value.

Installation

The ARC T-Barrier Timber Frame is easily installed as the timber frame is erected. Polythene flanges are present to allow the barrier to be stapled back to the timber while the brickwork progresses, when a compression fit ensures the barrier stays in place. For runs of more than 1.2m, lengths of T-Barrier should be butted tightly together, with care taken to ensure there are no gaps.

Fire Properties

ARC T-Barrier Timber Frame has been assessed at Chiltern International Fire, achieving up to one hour fire integrity when installed between timber frame and brickwork.
Certifire scope: CF5403



Don't take our
word for it, see our
accreditation...

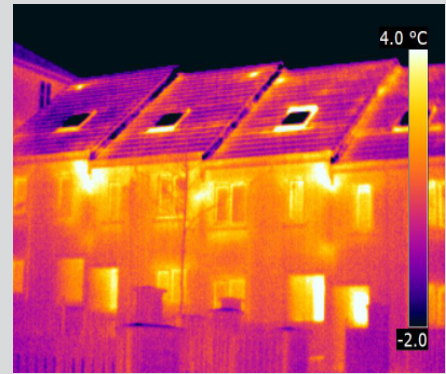


Assessed to ISO 9001 & ISO 14001
BRE Certificate No. 1227



The Problem: Thermal Bypass

Without effective edge sealing, the party wall cavity allows heat to escape. The image (right) highlights the areas of heat loss in a row of terraced houses. Of particular note is the heat loss at the top of the junction where the party wall cavity meets the external cavity.

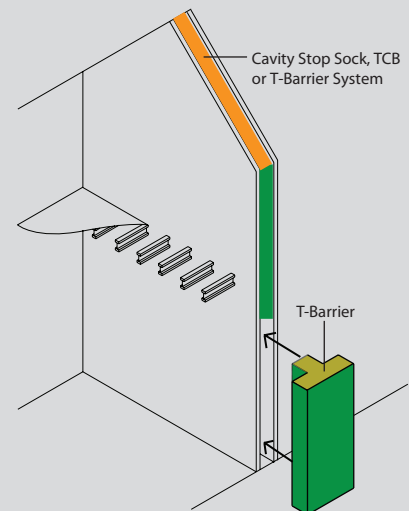


The Solution

ARC T-Barrier creates an effective edge seal around the party wall cavity which, in conjunction with a fully filled party wall cavity, will allow a zero U-value to be achieved.

ARC T-Barrier should be installed vertically where party wall cavity meets the external cavity, while an ARC Cavity Stop Sock or TCB should be used to top out the party wall cavity.

If compliance with NHBC (2016) Chapter 7.2.16 is required, ARC T-Barrier System should be fitted, this providing fire stopping between the party wall blockwork and the roof as well as within the soffit. For more information on ARC T-Barrier System, visit our website www.arcbuildingsolutions.co.uk.



Party Wall Construction	U-value (W W/m²K)
Solid	0.0
Unfilled cavity with no effective edge sealing	0.5
Unfilled cavity with ARC T-Barrier installed around all exposed edges and inline with insulation layers in abutting elements	0.2
A fully filled cavity with ARC T-Barrier installed around all exposed edges and inline with insulation layers in abutting elements	0.0

Thermal Properties: Ψ -value

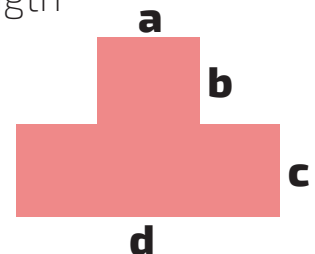
The ARC T-Barrier can be used to improve upon the Accredited Construction Detail linear thermal transmittance (Ψ -value) of 0.060W/m.K. A Ψ -value of 0.047W/m.K can be achieved when using the ARC T-Barrier in a junction with a 50mm party wall cavity and 0.052W/m.K with a 75mm party wall cavity.

Junction	Ψ (W/m.K)	f Rsi
Party Wall Accredited Construction Detail	0.060	-
Party Wall with ARC T-Barrier (50mm PW cavity)	0.047	0.936
Party Wall with ARC T-Barrier (75mm PW cavity)	0.052	0.936

The Ψ -values stated in this table should be applied to each dwelling either side of a party wall.

Dimensions explained...

a/b x c/d x length



Dimensions & Packaging Specification

Product Code	Party Wall Cavity	External Cavity	Dimensions	Fire Rating	Pack Quantity	Packs Per Pallet
TBTF50/50	50mm	50mm	65/65 x 65/200 x 1200mm	1 hr	12	10
TBTF70/50	70mm	50mm	85/65 x 65/200 x 1200mm	1 hr	12	10

Non-standard sizes available on request. Contact us for more information.

T-Barrier Timber Frame

Standards

ARC T-Barrier is manufactured using rockfibre mineral wool which achieves a fire classification of Euroclass A1 as defined in BS EN 13501-1, and conforms to BS EN 13162 and EN16001 Energy Management Systems.

ARC's rockfibre mineral wool insulation has a thermal conductivity of 0.037W/mK.

Storage and Packaging

ARC T-Barriers are supplied in polythene packs which are designed for transporting and protecting the products. It is not recommended that the packs are stored in direct sunlight. When storing the barriers for longer periods of time it is recommended that the product should be stored indoors, or under cover.

Environment

No CFCs or HCFCs are involved in the manufacturing process of ARC's rockfibre mineral wool insulation. The material presents no known threat to the environment and is classed as ODP and GWP zero.

ARC T-Barrier has a Green Guide rating of A+.

Health and Safety

ARC Building Solutions has an approved Health and Safety Policy and is committed to working and supplying products safely. ARC's rockfibre mineral wool is not classed as a possible human carcinogen. We have assessed products as required by Substances Hazardous to Health Regulations (COSHH). An ARC COSHH data sheet is available and can be downloaded from ARC's website.

You might also be interested in...

ARC T-Barrier System: Fire, Thermal and Acoustic Requirements at the Party Wall and Pitched Roof

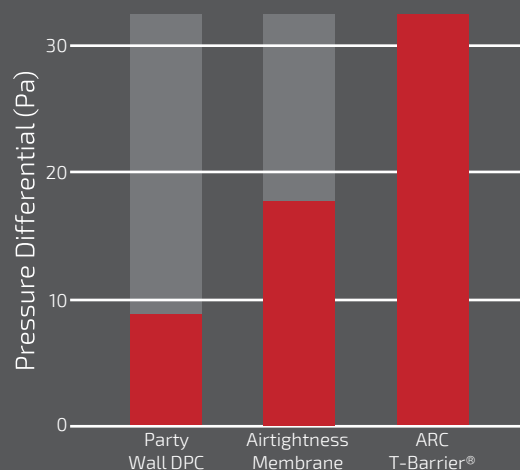


Edge Seal Effectiveness

The effectiveness of ARC T-Barrier as an edge seal has been independently tested by Leeds Beckett University. The test replicated real life conditions by measuring the differentials between pressurised and non-pressurised cavities.

This ground-breaking test is the only effective test available currently to measure a product's effectiveness as an edge seal.

ARC T-Barrier was found to provide three times the pressure differential compared to a conventional cavity barrier system, and nearly twice the pressure differential of the Airtightness Membrane employed by some house builders.



Results presented were obtained using a 100mm party wall cavity with a 100mm external cavity.



Leeds Sustainability Institute