



Mannok EPS Pearl is one of a range of expanded polystyrene insulation boards we manufacture for domestic and commercial floor applications

## Benefits of Mannok EPS Pearl

- Mannok EPS Pearl is a closed cell expanded polystyrene (EPS) insulation board suitable for use in all floor constructions.
- Available in compressive strengths of 70Kpa and 100Kpa to suit domestic to commercial applications
- Mannok EPS Pearl is certified by the British Board of Agrément (BBA) and the Irish board of Agrément (IAB).
- Mannok EPS Pearl can be used with underfloor heating systems.
- When installed correctly Mannok EPS Insulation boards have a service life comparable to that of the building.

### Composition

Mannok EPS Pearl is manufactured by using steam to expand polystyrene beads to approximately forty times their original size. As the beads expand the bond and can then be moulded to the required shape. Mannok EPS Insulation Pearl is manufactured using advanced EPS polymers which offer improved thermal performance.

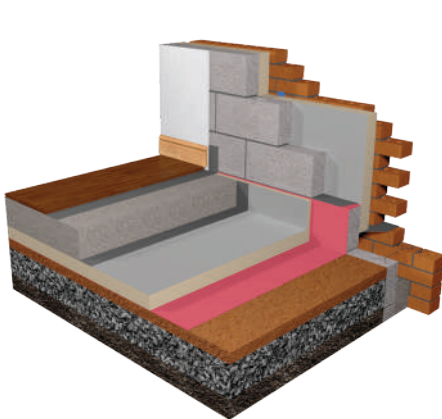
### Thermal Performance

Mannok EPS Pearl has a thermal conductivity of 0.031W/mK, making it one of the most efficient expanded polystyrene boards on the market.

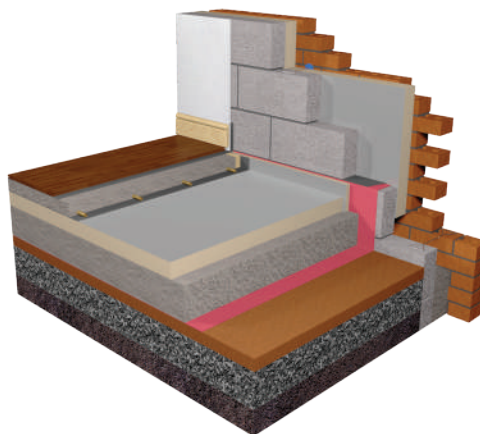
### Environmental

Mannok EPS Pearl is manufactured from EPS (expanded polystyrene) and achieves an A+ rating in the BRE Green Guide to Specification.

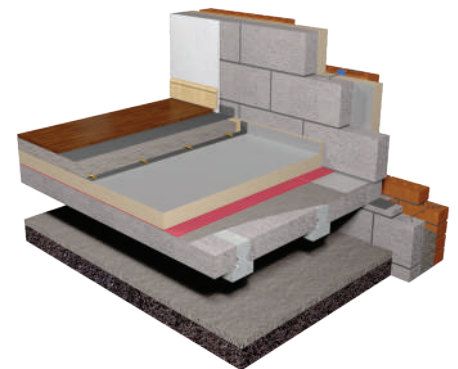
## Applications



Solid ground floor:  
MF below groundbearing slab



Solid ground floor:  
MF above groundbearing slab



Suspended beam and block floor

## CE Marking



Construction Products Regulation (CPR) requires mandatory CE marking for all thermal insulation products. Mannok EPS Pearl boards are CE marked to harmonised standard EN 13163. The Declaration of Performance, 04/013†, is available on our website (see bottom of page for link)

## Delivery & Storage

Mannok EPS Pearl boards are shrinkwrapped in polythene for delivery to site. Each pack is labelled with the product description, product characteristics, manufacturer's name and brand name, quantity per pack, and any identification marks.

## Biological / Chemical

Mannok EPS Pearl EPS insulation is non-toxic and non-biodegradable. Mannok EPS Pearl will not sustain mould growth and offers no nutrient value to insects or vermin.

## Technical Support

Mannok EPS Insulation provides a comprehensive technical support service for designers and contractors.

Mannok EPS Insulation can provide:

- Copies of Agrément certificates
- U-value calculations
- Interstitial risk calculations
- Design advice
- Guidance on the most effective ways to meet current Building Regulations and Building Standards.

Contact Technical Support:

- Call: +44 (0) 28 6774 8866
- Email: [technical@mannokbuild.com](mailto:technical@mannokbuild.com)

## Physical & Performance Characteristics

Compressive strength at 10% deformation (kPa):	70/100
Bending Strength (kPa):	115/150
Dimensional stability:	DS (N) 5
Thermal conductivity	0.031 W/mK
Long term water absorption	WL (T) 05 (less than 5%) less than 1%
- total immersion	
- partial immersion	

## Fire Performance

Solid ground floors are not required to provide fire resistance. When properly installed Mannok EPS Pearl is fully protected by the concrete slab and will have no adverse effect on the fire performance of the building into which it is installed.

Mannok EPS Pearl is supplied as non-flame retardant material as standard.

## Dimensional stability / Durability

When tested to EN 1604 Mannok EPS Insulation Pearl achieves level DS(N)5 to EN 13163.

Mannok EPS Pearl will perform for the service life of the building.

## Design and Installation

For design and installation information plus thicknesses of Mannok EPS Pearl to achieve specific U-values in all floor applications, consult our Product & Installation Guide, available from Mannok EPS Insulation or via our website.

For further information:

Mannok Ltd, Derrylin, Co. Fermanagh, Northern Ireland BT92 9GP

t: +44 (0) 28 6774 8866 | [www.mannokbuild.com](http://www.mannokbuild.com) | [info@mannokbuild.com](mailto:info@mannokbuild.com)



Every effort has been taken in the preparation of this data sheet to ensure the accuracy of representations contained herein. Recommendations as to the use of materials, construction details and methods of installation are given in good faith and relate to typical situations. However, every site has different characteristics and reliance should not be placed upon the foregoing recommendations. Advice can be given as to specific applications of the products, upon request to Mannok.