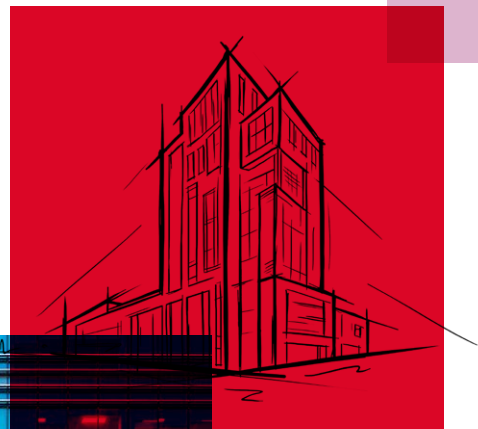


FIREPRO[®] **SOFTSEAL SYSTEM** **LINEAR JOINT** **SEALS**

Flexible firestopping for joint applications



FIREPRO® SOFTSEAL SYSTEM

The ROCKWOOL FIREPRO® SoftSeal System has been developed in response to demand from the market for a firestopping solution where high levels of movement in the building's services or joints need to be accommodated.

The FIREPRO® SoftSeal System is suitable for applications in linear joint seals.





Description

Part of the ROCKWOOL FIREPRO® range, FIREPRO® SoftSeal System incorporates a product specifically designed to accommodate movement within buildings in linear joint seals.

Advantages

- Acoustically absorbent
- CE Marked
- Easy to handle and install
- Both vertical and horizontal joint applications
- Tested for durability to current EU guidelines
- Supplied pre-coated

Applications



Linear joint seals

Linear joint seals

Description

As part of the comprehensive FIREPRO® range of fire protection products, ROCKWOOL FIREPRO® SoftSeal System incorporates a product specifically designed to form a linear joint seal within buildings, where the design needs to accommodate movement in the joint.

It may be installed horizontally or vertically and is suitable for linear joint widths up to 300mm*. FIREPRO® SoftSeal Linear Joint Seal can also be used as a 'head-of-wall' barrier to extend the fire resistance and acoustic performances of masonry walls that finish at suspended ceiling height, up to the concrete soffit above. FIREPRO® SoftSeal Linear Joint Seal can be used in conjunction with ROCKWOOL Ablative Coated Batt for head-of-wall applications.

A FIREPRO® SoftSeal Linear Joint seal comprises a low-density stone wool FIREPRO® SoftSeal batt, pre-coated with FIREPRO® SoftSeal Flexible Coating. Depending on the application, FIREPRO® SoftSeal Linear Joint Seal can be supplied on either one or both sides. (Single Sided for Horizontal Applications. Double sided for Vertical Applications).

The FIREPRO® SoftSeal Flexible Coating is also available in 5L, 10L and 20L tubs to enable site repairs to FIREPRO® SoftSeal Coated Strips and FIREPRO® SoftSeal Linear Joint Seals, that may have been damaged during installation.

The FIREPRO® SoftSeal Linear Joint Seal is supplied in strips 1200mm x 200mm x 100mm.

*Linear Joints over 300mm wide can be accommodated, with the addition of steel Z brackets.
For further information and advice on sizes or applications, please contact Rockwool Technical Solutions Team on 01656 862621.



SoftSeal installed as a linear joint seal

Performance

Fire performance

ROCKWOOL FIREPRO® SoftSeal Linear Joint Seal has been tested to the dedicated fire resistance standard for linear joint seals BS EN1366-4 and shown to provide up to 4 hours fire performance (E240 & EI80).

Movement

As part of the testing to BS EN 1366-4, FIREPRO® SoftSeal was assessed for its movement capabilities, prior to conducting the fire test. The product was tested to accommodate movement (expansion and contraction) of +/-25%.

Acoustics

Tested to EN 10140 based on two thicknesses with the following results:

- Rw 30 dB: When installed with 100mm thick SoftSeal Batt
- Rw 39 dB: When installed with 200mm thick SoftSeal Batt
- Dn,e,w 40 dB: When installed with 100mm thick SoftSeal Batt
- Dn,e,w 49 dB: When installed with 200mm thick SoftSeal Batt

Water permeability

Tested to EN 1027 - No leakage observed up to 300Pa.

Air permeability

- Tested to EN 1026 up to 600Pa.
- Leakage at 50Pa - 0.1/1.4 m³/m²/h.

Technical information

Standards and approvals

FIREPRO® SoftSeal has been tested and assessed to BS EN1366-4: 2006 + A1: 2010 and classified to EN 13501-2.

FIREPRO® SoftSeal Linear Joint Seal system has been CE marked against ETAG026-3.

Product information

Property	Description
Length	1200mm
Width	200mm
Thickness	100mm
Fire Resistance	Up to 4 hours
Coating	1 side
Density	80Kg/m ³
Movement	+/- 25%

Installation

1. Measure the width of the Linear Joint to be sealed.
2. Cut the FIREPRO® SoftSeal Coated Strips up to 25% bigger than the joint width, so when installed they are under compression.
3. Ensure substrate is clean and free of dust and debris.
4. Install the FIREPRO® SoftSeal Linear Joint Seal with the coating on the top surface.
5. Apply FIREPRO® SoftSeal Flexible Coating to the face of all joints between the seal and the substrate, overlapping by 20mm.
6. Apply FIREPRO® SoftSeal Flexible Coating to the faces of all butt joints between pieces of Soft Seal Linear Joint Seal.

Specification clauses

FIREPRO® SoftSeal System is associated with the following NBS clauses:

P12 Fire stopping systems

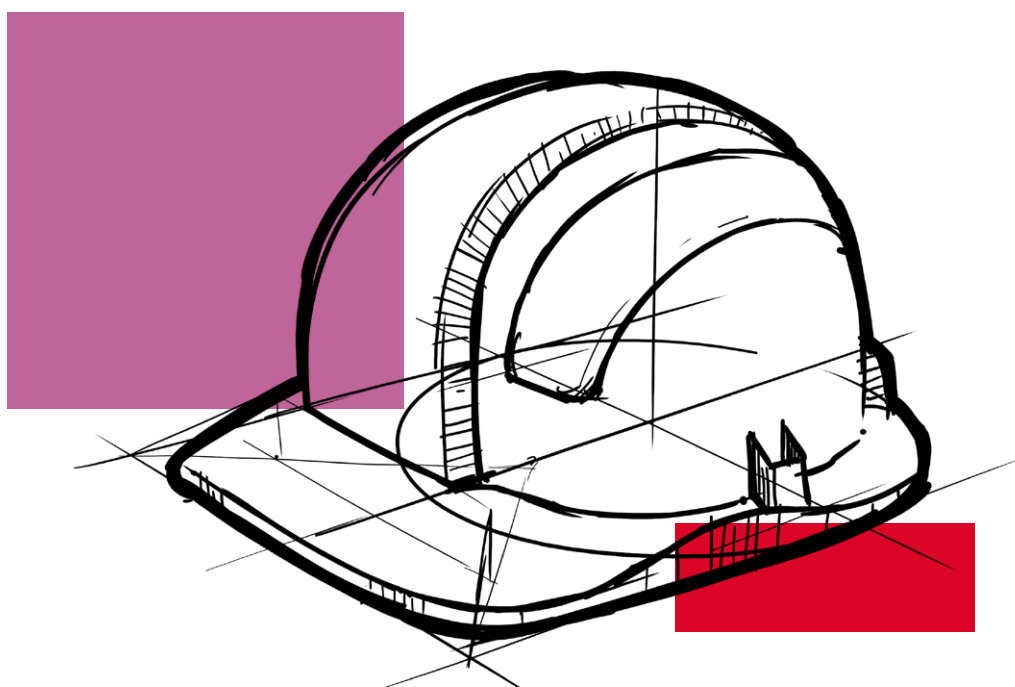
- 160 – Linear gap sealing

Disclaimers

This product should only be utilised for applications as outlined in the relevant ROCKWOOL product datasheet and in accordance with the relevant ROCKWOOL Fire Resistance Testing. Additionally, the product must be installed in accordance with the current ROCKWOOL guidelines. For further information please visit www.rockwool.co.uk or contact our Technical Solutions Team on 01656 868490.

Supporting information

For further information relating to any aspect of the FIREPRO® range, please refer to the applicable ROCKWOOL standard details at www.rockwool.co.uk or contact the ROCKWOOL technical solution team on 01656 868490 or technical.solutions@rockwool.co.uk.



Sustainability

As an environmentally conscious company, ROCKWOOL promotes the sustainable production and use of insulation and is committed to a continuous process of environmental improvement.

All ROCKWOOL products provide outstanding thermal protection as well as four added benefits:



Fire resistance



Acoustic comfort



Sustainable materials



Durability

Environment

Made from a renewable and plentiful naturally occurring resource, ROCKWOOL insulation saves fuel costs and energy in use and relies on trapped air for its thermal properties.

ROCKWOOL insulation does not contain (and has never contained) gases that have ozone depletion potential (ODP) or global warming potential (GWP).

ROCKWOOL stone wool insulation is approximately 97% recyclable. For waste ROCKWOOL material that may be generated during installation or at end of life, we are happy to discuss the individual requirements of contractors and users considering returning these materials to our factory for recycling.

Health & Safety

The safety of ROCKWOOL stone wool is confirmed by current UK and Republic of Ireland health & safety regulations and EU directive 97/69/EC: ROCKWOOL fibres are not classified as a possible human carcinogen.

A Material Safety Data Sheet is available and can be downloaded from www.rockwool.co.uk to assist in the preparation of risk assessments, as required by the Control of Substances Hazardous to Health Regulations (COSHH).



Interested?

For further information, contact the Technical Solutions Team on 01656 868490 or email technical.solutions@rockwool.co.uk

Visit www.rockwool.co.uk to view our complete range of products and services.

Copyright ROCKWOOL September 2018.

The ROCKWOOL Trademark

ROCKWOOL® - our trademark

The ROCKWOOL trademark was initially registered in Denmark as a logo mark back in 1936. In 1937, it was accompanied with a word mark registration; a registration which is now extended to more than 60 countries around the world.

The ROCKWOOL trademark is one of the largest assets in the ROCKWOOL Group, and thus well protected and defended by us throughout the world.

If you require permission to use the ROCKWOOL logo for your business, advertising or promotion. You must apply for a Trade Mark Usage Agreement. To apply, write to:
marketcom@rockwool.com.

Trademarks

The following are registered trademarks of the ROCKWOOL Group:

ROCKWOOL®

ROCKCLOSE®

RAINSCREEN DUO SLAB®

HARDROCK®

ROCKFLOOR®

FLEXI®

BEAMCLAD®

FIREPRO®

Disclaimer

ROCKWOOL Limited reserves the right to alter or amend the specification of products without notice as our policy is one of constant improvement. The information contained in this brochure is believed to be correct at the date of publication. Whilst ROCKWOOL will endeavour to keep its publications up to date, readers will appreciate that between publications there may be pertinent changes in the law, or other developments affecting the accuracy of the information contained in this brochure. The applications referred to within the brochure do not necessarily represent an exhaustive list of applications. ROCKWOOL Limited does not accept responsibility for the consequences of using ROCKWOOL in applications different from those described within this brochure. Expert advice should be sought where such different applications are contemplated, or where the extent of any listed application is in doubt.

© ROCKWOOL 2018. All rights reserved.

Photography and Illustrations

The product illustrations are the property of ROCKWOOL Ltd and have been created for indicative purposes only.

Unless indicated below, the photography and illustrations used in this guide are the property of ROCKWOOL Limited. We reserve all rights to the usage of these images.

If you require permission to use ROCKWOOL images, you must apply for a Usage Agreement. To apply, write to:
marketcom@rockwool.com.

Notes

Notes

Notes

July 2019

ROCKWOOL Limited

Pencoed
Bridgend
CF35 6NY

Tel: 01656 862 621

info@rockwool.co.uk

rockwool.co.uk

