

# **FIREPRO<sup>®</sup>** **SP FIRESTOP** **SYSTEMS**

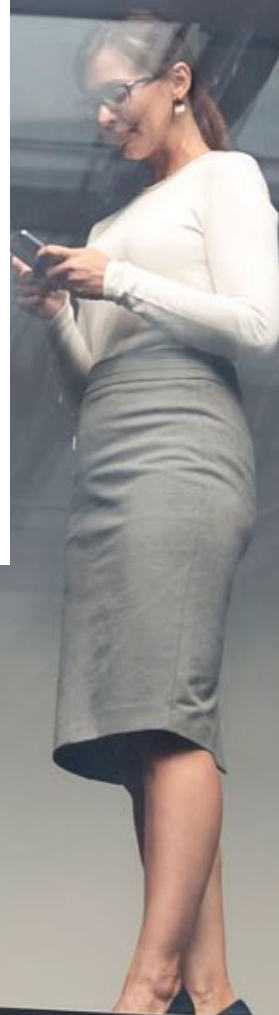
The purpose-made solution for cavity fire stopping

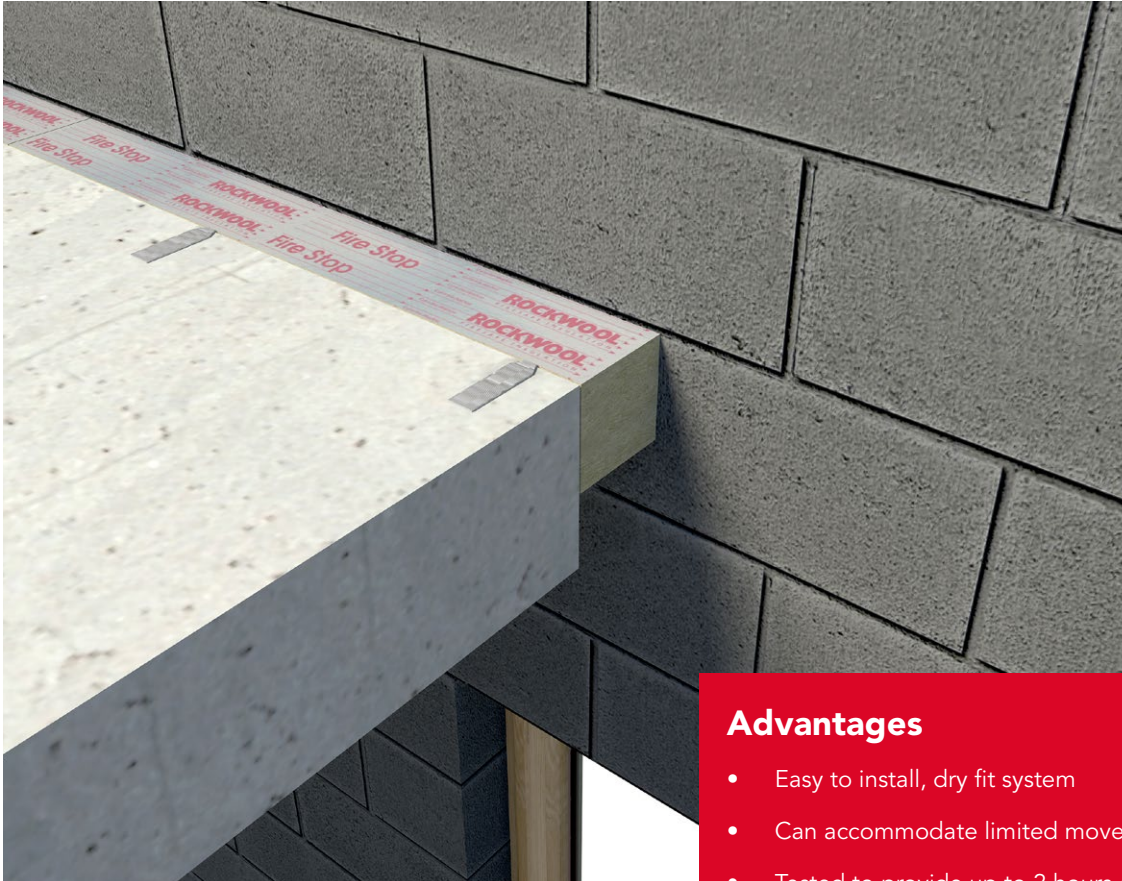


# FIREPRO SP FIRESTOP SYSTEMS

The SP FireStop Slab® has been specifically designed to form cavity fire stops within buildings.

SP FireStop Slab® is a one-piece system enabling easy cutting and installation. The solution provides a unique lateral compression to facilitate a tight fit between substrates.





## Description

ROCKWOOL SP Firestop System comprises of both the SP Firestop Slab and SP Firestop fixing brackets. The SP Firestop Slab is a medium density stone wool slab which incorporates a foil facing to both sides. The foil facing includes cutting lines to support accurate installation.

## Advantages

- Easy to install, dry fit system
- Can accommodate limited movement
- Tested to provide up to 2 hours of fire resistance
- Resists the passage of smoke – aluminium foil faced on both sides
- Suitable for cavity widths up to \*1000mm

\*Please contact ROCKWOOL Technical Solutions for fire resistance ratings in voids over 600mm wide.

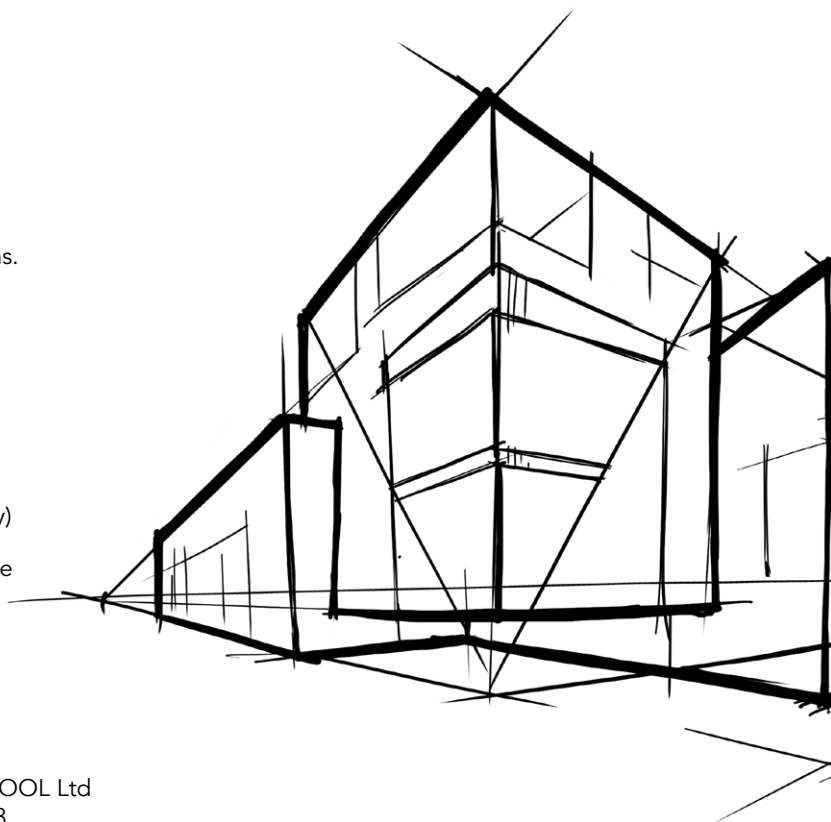
## Applications

SP Firestop System may be installed horizontally or vertically and is suitable for cavity widths between 50mm and 600mm. SP Firestop can also be used horizontally in cavity widths up to 1000mm for further information please contact ROCKWOOL Technical Solutions.

SP Firestop System is suitable for:

- Masonry constructions
- Curtain Walling Systems
- Large cavity voids
- Rainscreen Facades (vertical use only)

SP Firestop System is not suitable for use as a horizontal fire barrier in ventilated façade systems. For these applications consider using the ROCKWOOL SP Firestop OSCB.



## Performance

### Standards and approvals

SP Firestop System has been tested and assessed to BS 476: Part 20. It has also been tested to BS EN 1366-4: 2006 and classified to BS EN 13501-2.

Achieves Euroclass A1 in accordance with BS EN 13501-1.

SP Firestop System is third party approved with LPCB – certificate no. 022b.

This product has been authorised for use in LUL surface and sub-surface premises when installed in accordance with this datasheet. Please refer to the LUL Approved Product Register at [www.LU-apr.co.uk](http://www.LU-apr.co.uk) for specific details. LUL Ref: 2244.

### Fire performance

The SP Firestop System can achieve a fire resistance rating of up to 2 hours in voids of up to 600mm.

Product	Wall	Floor	Cavity (mm)	Test standard
SP60 (Standard)	EI60	EI60	400	BS 476 Part 20
SP120 (Standard)	EI120	EI120	400	BS 476 Part 20
Fire performance with +/- 3% Movement				
SP60 (Standard)		EI60	300	BS EN 1366-4
SP120 (Standard)		EI120	300	BS EN 1366-4
SP Plus (With XL Bracket)	EI120	EI120	600	BS EN 1366-4
SP Plus (With XL Bracket)		EI60	1000	BS EN 1366-4

### Movement testing

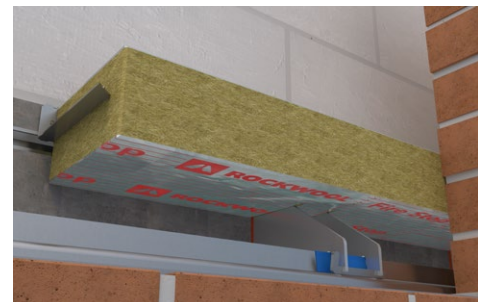
SP Firestop Slab has been tested with movement applied in accordance with the provisions set out in Annex B of BS EN 1366-4: 2006. SP60 and SP120 can accommodate +/- 3% movement in cavities up to 300mm

### Masonry support bracket penetration

The SP Firestop System has been tested in conjunction with the masonry support brackets where the masonry support system penetrated the SP 60 Firestop Slab.

Product	Bracket Penetration	Fire Resistance	Cavity (mm)	Test Standard
SP60 Firestop Slab	50%	EI60	400	BS EN 1366-4
SP60 Firestop Slab	100%	EI60	400	BS EN 1366-4

For further information on the use of masonry support brackets with the SP Firestop System please contact ROCKWOOL Technical Solutions.



**Acoustic performance**

ROCKWOOL products have excellent acoustic properties and can significantly reduce the levels of airborne sound transmission through wall and floor cavities. For further information please contact ROCKWOOL Technical Support.

**Product information**

Property	Description
Length	1000mm
Width	650mm
Thickness	75 & 90mm
Fire Resistance	Up to 2 hours

**Handling**

ROCKWOOL SP Firestop Slabs are light and easy to handle. They are supplied in compression wrapped polyethylene, which will provide short term protection. For long term storage they must be protected by a waterproof covering.

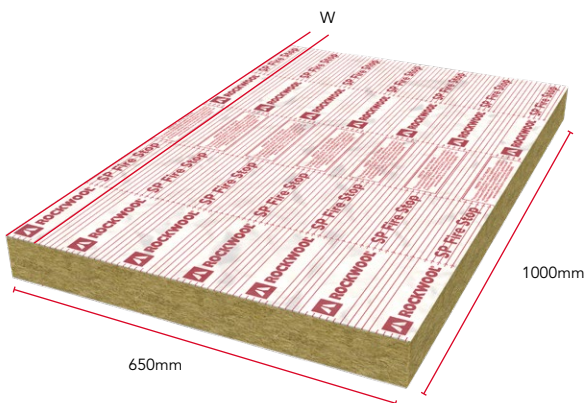
**Installation**

ROCKWOOL SP Firestop Slabs are designed for cutting on site with a sharp knife or saw and a straight edge. The cavity to be fire stopped should be measured and the ROCKWOOL SP Firestop Slab cut to suit this dimension, using one piece only per gap width - see Figures 4 and 5.

For easy compression fitting and to accommodate the fixing pattern, cutting should be along the 1000mm length as indicated in figure 1.

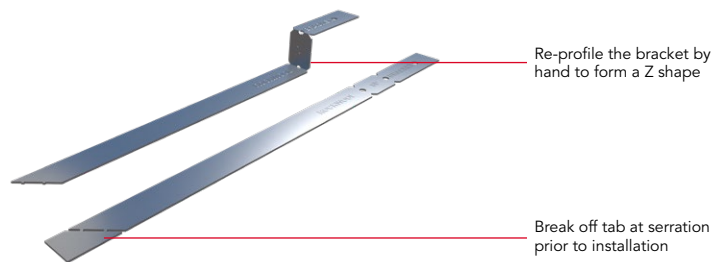
The SP Fixing Brackets are then re-profiled by hand and cut as necessary to allow at least 75% penetration of the fire stop material – see Figures 2 and 3.

They should be placed as shown in the diagrams, or fixed by other suitable mechanical means.

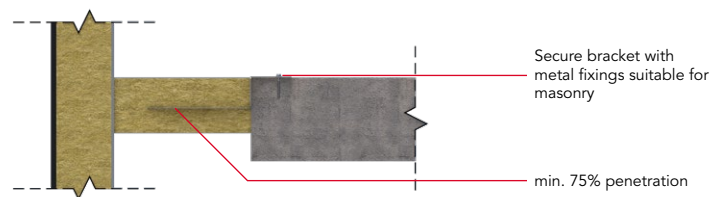


SP Firestop Slab - direction of cut to produce 1000mm long Firestop strips to suit cavity width W

**Figure 1**  
Cutting method for SP Firestop Slab



**Figure 2**  
SP Firestop Fixing Bracket



**Figure 3**  
Sectional view of Firestop Slab and Bracket

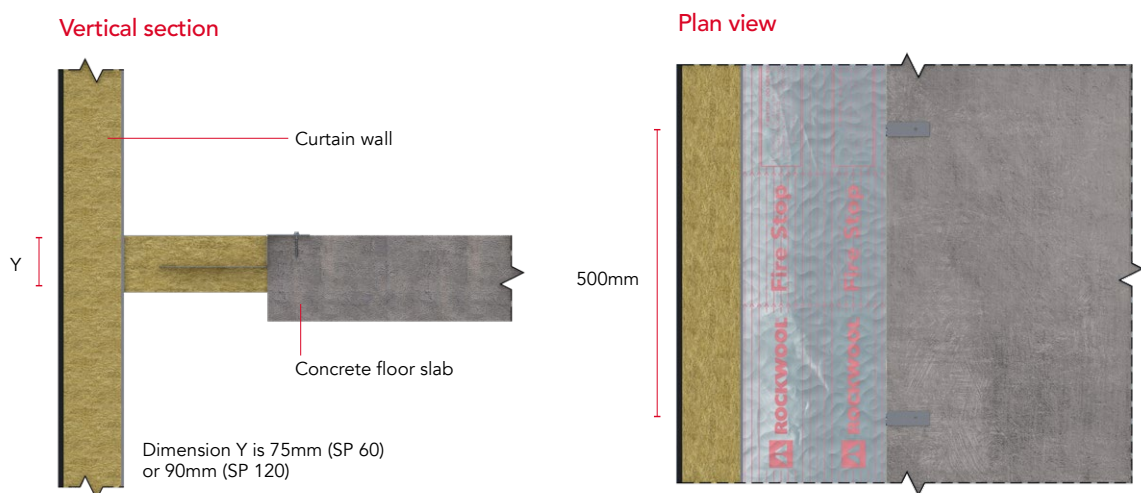
**Fixing within cladding & curtain walling systems**

1. Cut the ROCKWOOL SP Firestop Slab to suit the \*cavity size, allowing for additional compression of up to 10mm.
2. The ROCKWOOL SP60 or SP120 Firestop Slab is impaled onto the SP Fixing Brackets at the rate of 2 per 1000mm length, fixed at 500mm ±10mm centres as shown in Figure 4. The SP Fixing Brackets should be placed 250mm ±10mm in from each end of the ROCKWOOL SP Firestop Slab.
3. The product should then be fitted securely into the void and tightly butted to the adjacent ROCKWOOL SP Firestop Slab.
4. Once the ROCKWOOL SP Firestop Slab has been accurately fitted, the SP Fixing Brackets must then be fitted to the edge of the concrete floor slab with metal fixings suitable for masonry.

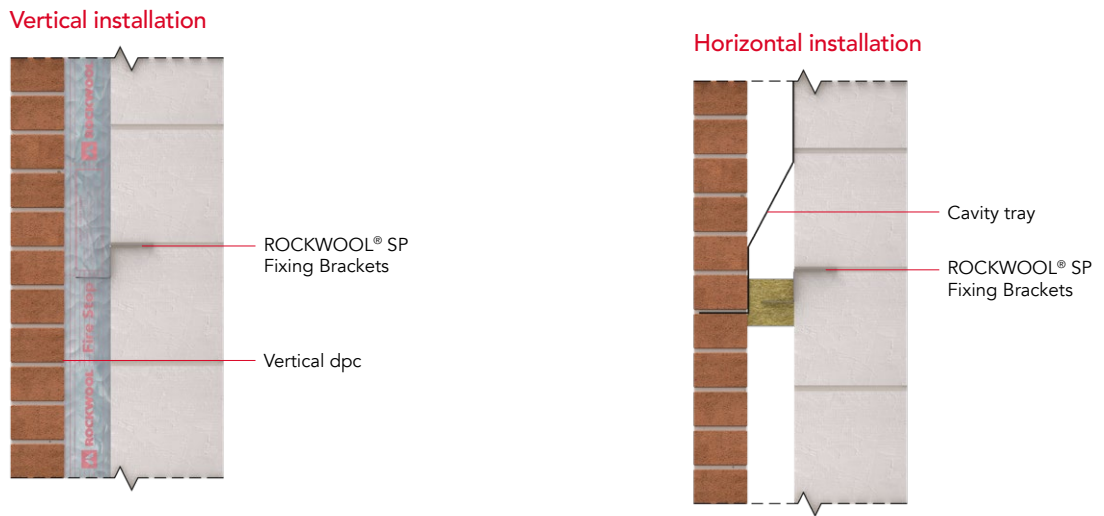
**Fixing into masonry wall cavities:**

5. Cut the ROCKWOOL SP Firestop Slab to suit the \*cavity size ensuring a tight fit.
6. After suitably re-profiling the SP Fixing Brackets they can be built into the bed joints of the internal leaf at 500mm ±10mm centres. Alternatively the SP Fixing Brackets may be re-profiled by hand into an 'L' shape and mechanically fixed to the face of the inner leaf.
7. The ROCKWOOL SP Firestop Slab is then impaled onto the SP Fixing Bracket after the next lift of inner leaf masonry.
8. Work on both leaves can then be continued and must include either a vertical damp proof course (vertical installation) or a cavity tray (horizontal installation) installed over the SP Firestop Slab as shown in Figure 5.

\*For cavity widths of 250mm or more, joints between adjacent lengths of SP Firestop Slab should be sealed on the top surface with aluminium foil tape.



**Figure 4**  
ROCKWOOL SP® Firestop Slab between floor and curtain wall



**Figure 5**  
ROCKWOOL SP® Firestop Slab between masonry leaves

## Ancillaries

### SP Firestop Fixing Brackets

Bracket Type	Cavity Size (Up to mm)	Pieces/Pack
SP/S	100	50
SP/L	400	50
SP/XL	600	50

ROCKWOOL SP Fixing Brackets are supplied in three standard sizes; SP/S (small), SP/L (large) and \*SP/XL for cavity widths up to 600mm. The brackets are supplied in cardboard boxes of 50 pieces, flat packed and designed to be easily re-profiled by hand on site.

\* SP/XL brackets are designed for use with SP Firestop Plus Slab for 2 hours fire resistance in cavities up to 600mm.

Brackets are supplied in cardboard boxes, flat packed, and are designed to be easily re-profiled by hand on site. The SP Fixing Brackets should be cut on site as necessary to allow at least 75% penetration of the Firestop.

\*In order to comply with the fire test certification, only ROCKWOOL SP Fixing Brackets must be used to install the product.

## Specification clauses

The SP Firestop System is associated with the following NBS Clauses:

F30 Accessories/sundry items for brick/block stone walling

- 180 Cavity Closers

P10 Sundry insulation/proofing work

- 432 cavity Barriers

P12 Fire stopping systems

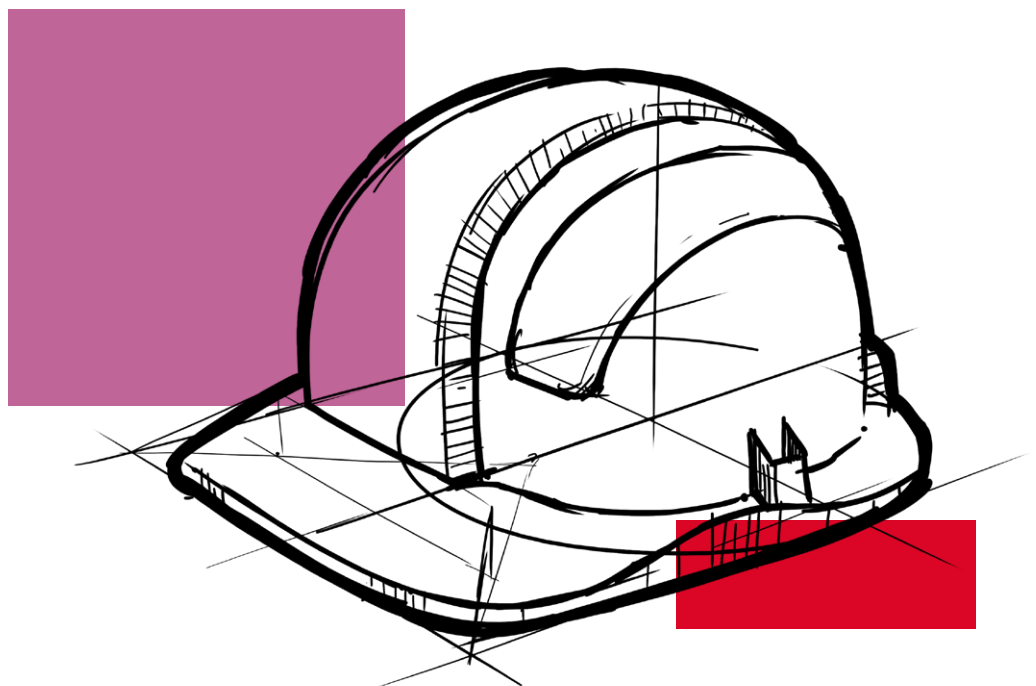
- 360 Mineral Wool Rigid Batts

## Disclaimers

This product should only be utilised for applications as outlined in the relevant ROCKWOOL product datasheet and in accordance with the relevant ROCKWOOL Fire Resistance Testing. Additionally the product must be installed in accordance with the current ROCKWOOL guidelines. For further information please visit [www.rockwool.co.uk](http://www.rockwool.co.uk) or contact our Technical Solutions Team on 01656 868490.

## Supporting information

For further information relating to any aspect of the FIREPRO range, please refer to the applicable ROCKWOOL standard details at [www.rockwool.co.uk](http://www.rockwool.co.uk) or contact the ROCKWOOL technical solution team on 01656 868490 or [technical.solutions@rockwool.co.uk](mailto:technical.solutions@rockwool.co.uk)





## Sustainability

As an environmentally conscious company, ROCKWOOL promotes the sustainable production and use of insulation and is committed to a continuous process of environmental improvement.

All ROCKWOOL products provide outstanding thermal protection as well as four added benefits:



**Fire resistance**



**Acoustic comfort**



**Sustainable materials**



**Durability**

## Environment

Made from a renewable and plentiful naturally occurring resource, ROCKWOOL insulation saves fuel costs and energy in use and relies on trapped air for its thermal properties.

ROCKWOOL insulation does not contain (and has never contained) gases that have ozone depletion potential (ODP) or global warming potential (GWP).

ROCKWOOL stone wool insulation is approximately 97% recyclable. For waste ROCKWOOL material that may be generated during installation or at end of life, we are happy to discuss the individual requirements of contractors and users considering returning these materials to our factory for recycling.

## Health & Safety

The safety of ROCKWOOL stone wool is confirmed by current UK and Republic of Ireland health & safety regulations and EU directive 97/69/EC: ROCKWOOL fibres are not classified as a possible human carcinogen.

A Material Safety Data Sheet is available and can be downloaded from [www.rockwool.co.uk](http://www.rockwool.co.uk) to assist in the preparation of risk assessments, as required by the Control of Substances Hazardous to Health Regulations (COSHH).



## Interested?

For further information, contact the Technical Solutions Team on 01656 868490 or email [technical.solutions@rockwool.co.uk](mailto:technical.solutions@rockwool.co.uk)

Visit [www.rockwool.co.uk](http://www.rockwool.co.uk) to view our complete range of products and services.

*Copyright ROCKWOOL February 2018.*

**Notes**

**Notes**

February 2018

**ROCKWOOL Limited**

Pencoed  
Bridgend  
CF35 6NY

Tel: 01656 862 621  
info@rockwool.co.uk  
rockwool.co.uk

